

## Configuring Faculty and University Owned Computers for Aeris: 802.1x Wireless Connectivity

### Affected Systems:

Microsoft Windows XP Professional SP2

Microsoft Windows XP Home SP2

### Required Updates:

Windows XP Service Pack 2

Windows XP wireless Hot Fix #KB885453 – Download from <http://www.bradley.edu/irt/projects>

This patch fixes a problem most computers have when connecting to secure wireless networks.

### Configure the Wireless Networking

1. Enable your wireless network service. (This may be a switch, or software that turns on the wireless card.)
2. Log in to the domain as a domain user.
3. Open **Wireless Network Connections**:

#### Classic Windows Style

- a. Click 
- b. Select **Control Panel**
- c. Choose **Network Connections**.

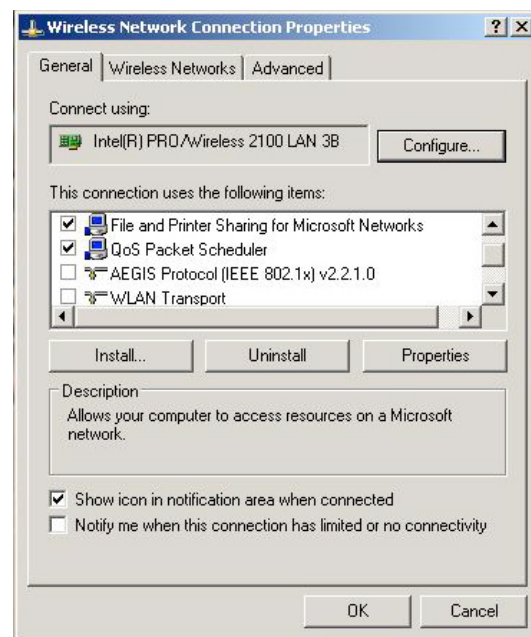
*Right-click* on **Wireless Connection** and select **Properties** from the submenu that is displayed.

#### Windows XP Style

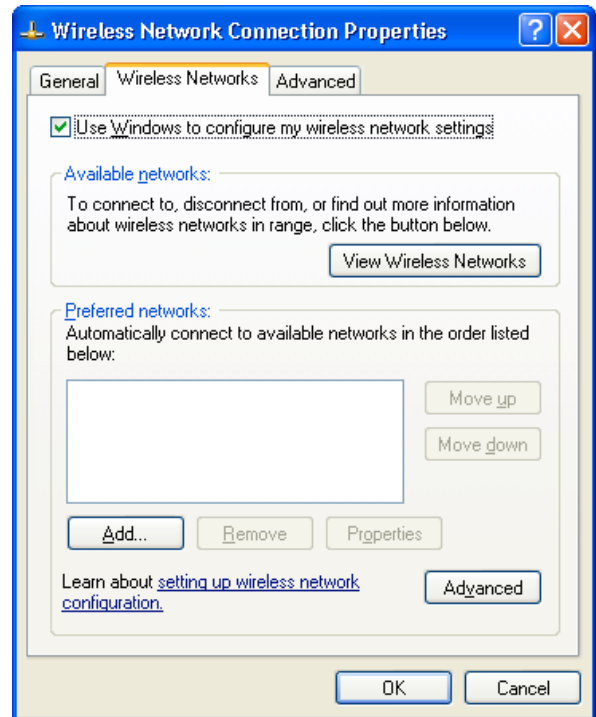
- a. Click 
- b. Select **Control Panel**
- c. Select **Network and Internet Connections**
- d. Choose **Network Connections**.

*Right-click* on **Wireless Connection** and select **Properties** from the submenu that is displayed.

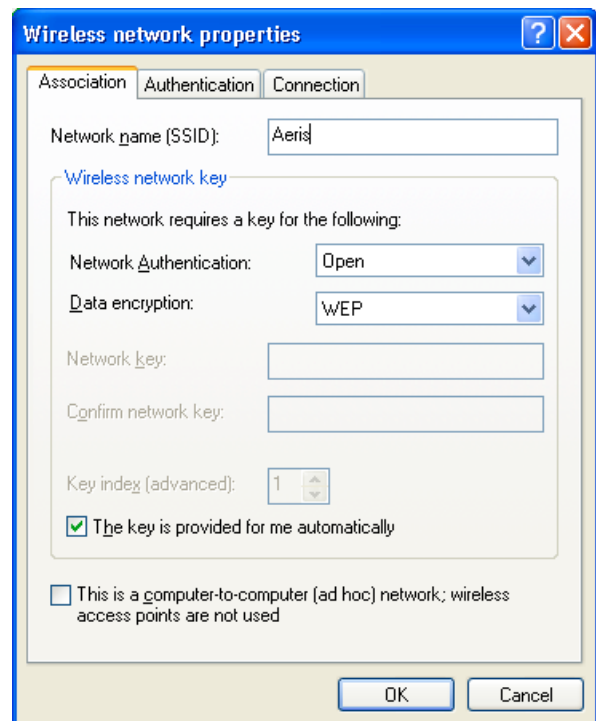
4. Select the General tab. Remove the check from **AEGIS Protocol**. (Not on all systems)



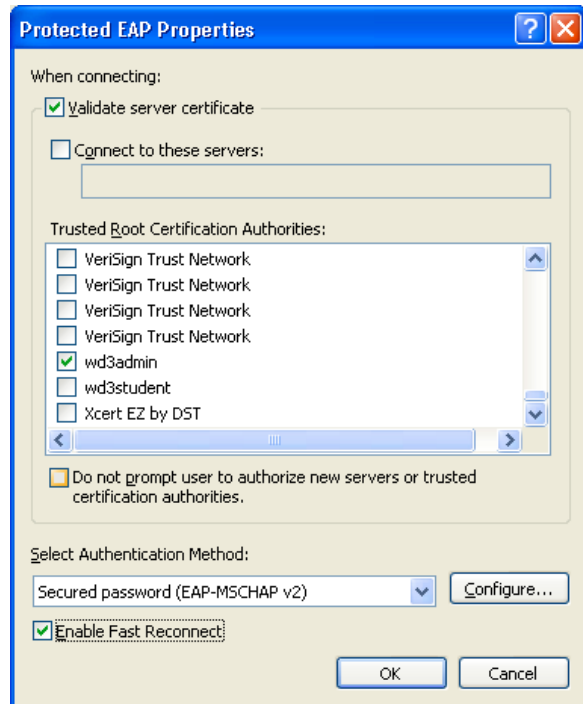
1. Click Wireless Networks tab:
2. **Verify Use Windows to configure my wireless network settings** is checked.
3. Click **Add**:



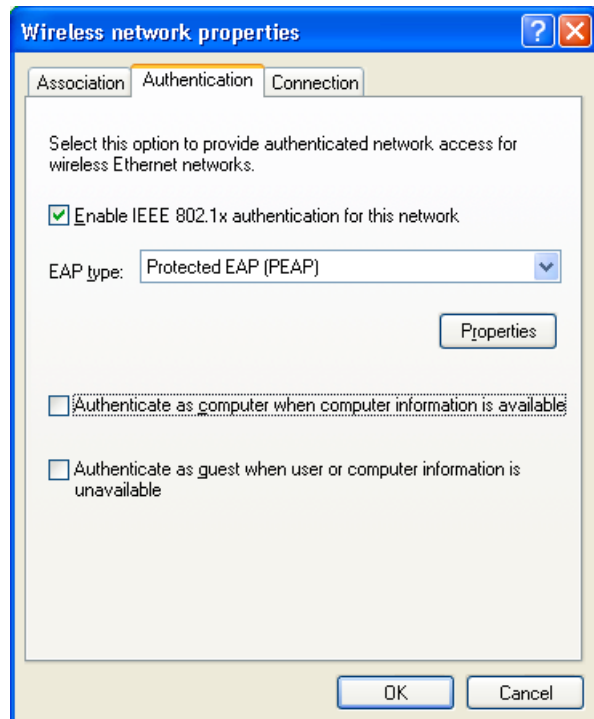
4. On the Association tab of the network properties window, enter **Aeris** in **Network Name (SSID)**. (cap sensitive)
5. Check the options for
  - a. **Data encryption (WEP enabled)**
  - b. **The key is provided for me automatically.**



6. On the Authentication tab of the network properties window:
  - a. Check the option for **Enable IEEE 802.1x authentication for this network**. For EAP type, select **Protected EAP (PEAP)**,
  - b. Remove the check from the option for **Authenticate as guest when user or computer information is available**.
  - c. Click **Properties**.



7. Check **Validate server certificate**, and then scroll down the list of Trusted Root Certification Authorities and check **wd3admin**.
8. Select **Secure password (EAP-MSCHAP v2)** for the Authentication Method, check **Enable Fast Reconnect**, and then click **Configure**.



- To enable single sign-on for computers that are members of the AD domain, check the option for **Automatically use my Windows logon name and password (and domain if any)**. Click OK to accept this setting.

*With single sign-on for PEAP, the client uses the Windows logon name for the PEAP authentication, so the user does not need to enter the password a second time.*



- Click **OK** until you have exited from **Wireless Network Connections Properties**.
- Restart the computer.