

BRADLEY UNIVERSITY PANHELLENIC COUNCIL

Parent Guide To Sorority Recruitment

This is an exciting time for your daughter, and we understand you may have questions about her interest in sorority life. At Bradley University, she'll have many opportunities to get involved, and we want you to be informed about the valuable experience sorority membership can offer.

Welcoming Environment

Each sorority is funded through member dues. First-year members pay some one-time fees, followed by semester dues. On-campus housing is available, and most sororities offer flexible payment plans.

Sense of Community

Finding community in college is important, and Sorority Life at Bradley offers that sense of belonging. It's about friendship, support, and a second family your daughter can count on.

Network Building

Sorority sisters offer a strong alumni network for future jobs and internships, while also encouraging your daughter to grow through leadership opportunities.

Not Like Social Media

The days of keg parties are over—today's sorority events include alcohol-free activities like moonlight bowling, dinner exchanges, and lip sync contests. Students who don't drink are supported and feel comfortable.

Academics

Sororities help ease the college transition with scholarship programs, study support, and time management tools. Members also guide each other in using campus resources like libraries, tutors, and advisors.

Welcome Week Schedule

Freshman Move-In: Aug 23 8am-4pm

Welcome Bash: Aug 24 12pm-2pm,
Alumni Quad

Block Party on Fredonia: Aug 25 4pm-6pm,
Fredonia Avenue

Activities Fair: Aug 26 10:30am-12:30pm,
Olin Quad

First Day of Classes: Aug 27

Recruitment Orientation: Aug 27 6-7p,
Markin Performance Court

Last Day to Sign Up for Recruitment:
Aug 29 by 12pm

Recruitment Schedule

Meet in the Markin Performance Court for each Round.

Round 1 - Sisterhood & Open House:
Aug 29 3:30pm-10:30pm

Round 2 - House Tours & Philanthropy:
Aug 30 9:30am-4:30pm

Round 3 - Preference Round:
Aug 31 9:30am-12:30pm

Bid Day - Invite Only:
Aug 31 6pm-7pm



Alpha Chi Omega

New Member
Chapter Dues: \$380
National Dues: \$135
Other Fees: \$804
Total: \$1,319

Initiated Member
Chapter Dues: \$310
National Dues: \$135
Other Fees: \$470
Total: \$915
(Room & Board: \$12,610)



Kappa Delta

New Member
Chapter Dues: \$216
National Dues: \$105
Other Fees: \$271
Total: \$592

Initiated Member
Chapter Dues: \$240
National Dues: \$105
Other Fees: \$220
Total: \$565
(Room & Board: \$9,650)



Chi Omega

New Member
Chapter Dues: \$1,165
(Includes National Dues
and other fees)
Total: \$1,165

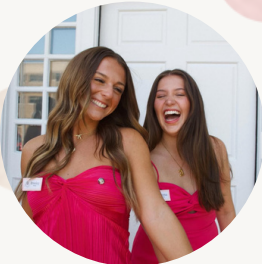
Initiated Member
Chapter Dues: \$500
(Includes National Dues
and other fees)
Total: \$500
(Room & Board:
\$13,000)



Pi Beta Phi

New Member
Chapter Dues: \$1,338
(Includes other Misc. Fees)
National Dues: \$190
Total: \$1,528

Initiated Member
Chapter Dues: \$896
(Includes other Misc. Fees)
National Dues: \$190
Total: \$1,086
(Room & Board: \$13,650)



Gamma Phi Beta

New Member
Chapter Dues: \$391
National Dues: \$276
Out of House Fee: \$200
Total: \$867

Initiated Member
Chapter Dues: \$325
National Dues: \$138.50
Total: \$463.50
(Room & Board: \$9,780)



Sigma Kappa

New Member
Chapter Dues: \$114
National Dues: \$117
Other fees: \$839
Total: \$1,070

Initiated Member
Chapter Dues: \$340
National Dues: \$117
Other Fees: \$98
Total: \$555
(Room & Board: \$9,000)

We understand the financial commitment of sorority life and aim to ease concerns. Many chapters offer payment plans and scholarships, and we value transparency by sharing the most current Fall 2025 dues.

Each chapter lists two types of dues: new member dues for the first semester and initiated member dues for each following semester. Room and board costs are also included for living in the chapter house.

*All Room & Board costs are per academic year

*Other dues are broken down differently by each individual chapter